



# FP-50U Fingerprint Access Controller

Versatile design suitable for all kinds of offices. Best choice to replace obsolete access code or swipe magnetic card systems



SAFE, SPEEDY, SIMPLE;

ACCESS CONTROL SOLUTION WORK JUST AT YOUR FINGERTIPS

- The best-buy access control product in the market
- Direct connections with TCP/IP
- The most advanced "Biometrics" recognition system

### Applicable to:

All kinds of offices, buildings, schools, residential estates, hotels, banks, access control for public organizations, etc.

Unique Fingerprint Recognition Technology



Dual Verifications: Fingerprint and/or Password



Easy usage of all kinds of users



Backlight multi-functional keyboard



Built-in anti-break-in alarm



# NIDEKA®



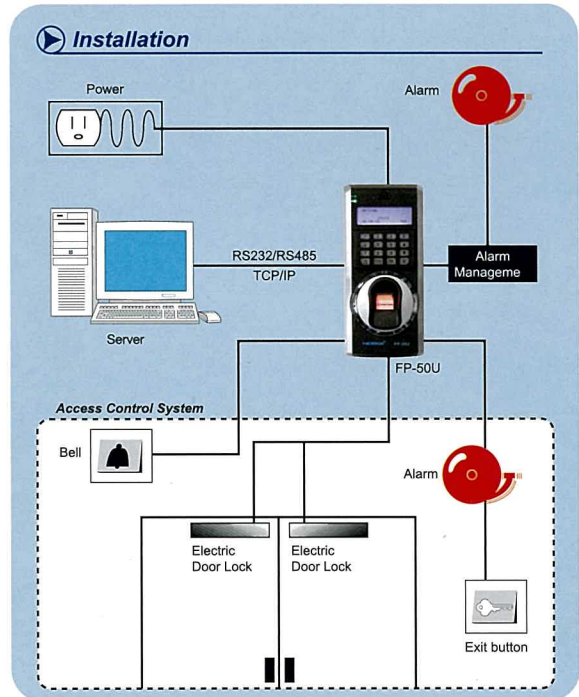
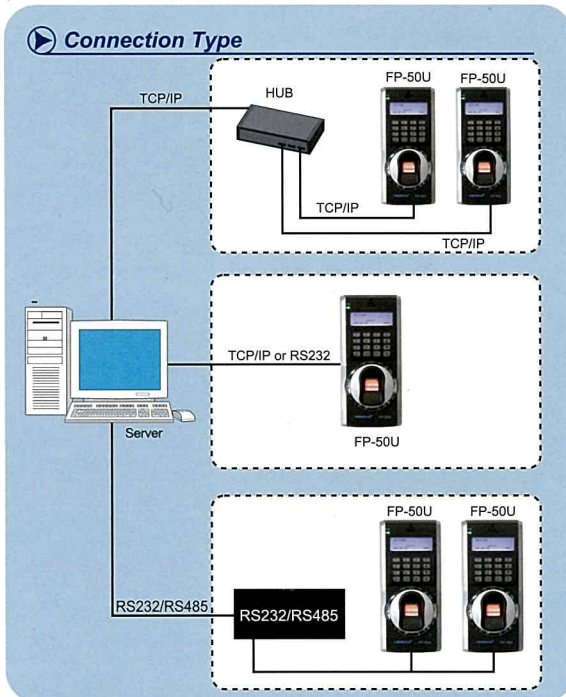
# FP-50U

## Fingerprint Access Controller



**Key Features:**

- ▶ 500/1,000/2,000/3,000 fingerprints;
- ▶ 30,000/50,000/80,000 Event Buffers;
- ▶ 1:1 Authentication and 1:N Identification;
- ▶ Standalone/Network communication via RS232/RS485 (max. 32ch) and TCP/IP;
- ▶ Up to 3 fingerprint templates per registration;
- ▶ Password Entry Available;
- ▶ Intrusion Alert;
- ▶ Protection from Scratch and ESD (Electrostatic Discharge);
- ▶ High Quality Optical Sensor



**Technical Specifications:**

• Fingerprint Memory	500/1,000/2,000/3,000 Fingerprints
• Transaction Memory	30,000/50,000/80,000 records
• Fingerprint Verification	1:1 or 1:N
• Professional Access Control Function	50 Time Zones, 5 Groupings, 10 Access Combinations and Holiday Management
• Communication	TCP/IP, RS232 or RS485
• Display & Keypad	122 X 32 LCD display with 16-key keypad
• Power Supply	Voltage: 3A/12V DC ; Standby Current: 50mA ; Operating Current: 400mA
• Recognition Speed	≤1sec.
• FRR	≤1%
• FAR	≤0.0001%
• Operating Temperature	0°C - 45°C
• Operating Humidity	20% - 80%
• Language	English, Traditional Chinese, Simplified Chinese
• Dimensions	180(L) x 82(W) x 55(H) mm