



Unit 3, 2/F., Block A, Hong Kong Industrial Centre,  
489-491 Castle Peak Road, Kowloon, Hong Kong  
Tel: +(852) 2745 1342 Fax: +(852) 2786 4647  
E-mail: [sales@union-business.com](mailto:sales@union-business.com)  
Website: <http://www.union-business.com>

---

**NIDEKA<sup>®</sup>**  
Time Attendance Since 1976

---



# CONTENTS

About Us P. 2

UBM Timeline P. 3-4

UBM Solutions P. 5-6

Time Attendance Device  
Facial Recognition P. 7-10  
Fingerprint Recognition P. 11-16

Access Control Device  
Facial Recognition P. 17-19  
Fingerprint Recognition P. 19-22  
PIN / Card Recognition P. 23  
Controller Board P. 23  
Accessories P. 24

Time & Attendance Recorder P. 25

Ribbon P. 26

Patrol Management System P. 27

Paper Shredder P. 28

Attendance Management System P. 29



## ABOUT US

Since our establishment in 1976, Union Business Machines Co., Ltd. (UBM) have strived to be the leader manufacturer, exporter and trade of a variety of time attendance recording equipments. Under the competent leadership of our Group Managing Director, Mr. Kindey Ng, we achieved over 90% of the local market share in the 80's and have climbed to attain the leading position in the industry. Our products have been exported worldwide and the sales network we have been maintaining covers most regions of the world.

To meet the changing market needs, UBM have expanded and diversified to produce a wide range of high-tech time attendance products including fingerprint recognition, RFID time attendance recorders, electronic and mechanical time recorders, door access control systems, guard touring management systems on iButton(R) technology, electronic time stamps, paper shredders and as well as their relevant accessories.

Besides manufacturing under our own brands, UBM also provides full range of OEM & ODM manufacturing services for all customers. In local vicinity markets we also provide installation, project consultation, repair & maintenance, and warehousing & logistics support. We have plants both in Hong Kong and PRC with all our 200+ well-trained engineers and staff continuously serving our customers. All our engineers have been well trained to provide competent and professional services to all our valuable customers.



# UBM TIMELINE

1936



A subsidiary business of NEC Japan, Nippon Jimuki Co. Ltd. launched their first wooden time-recorder Model 500 in Japan under the brand - NIDEKA.

1984

Achieved leading position in Time-recorder sales in the industry.



**NIDEKA®** 1986

Took over the Japanese technology and production know-how for NIDEKA brand of Time-recorders (Certificate Attached).

1988

Building upon the experience from NIDEKA, UBM established their own brand LUCKS.

1991

UBM succeeded in winning the appointment by the SIMPLEX group in USA as OEM manufacturer for their STELLAR time-recorders.

1995

UBM group made significant achievements in both overseas as well as mainland China markets.

2005

Launch our first Biometric Fingerprint Time & Attendance System.  
Launch our first IT Time & Attendance product Money 1000, marking the company's successful transition from traditional Time-recorders to IT Time & Attendance Systems.

2007



UBM group succeeded in winning appointment by the world's biggest publicly traded real estate investment trust: LINK REIT as supplier and system integrator for electronic patrol monitoring system in all of their managed properties and car parks.

1976

Started business in Hong Kong, major in traditional Time-recorders.



1985



Officially established Union Business Machines Co., Ltd.

1987

UBM Hong Kong was appointed authorised agent for watchman clock of the Japanese brand AMANO & the Germany BENZING respectively.

1990

Official opening of our first China Factory.

1993

Sales Office formed in Mainland China, launched products under Timmy and Timepower in PRC.

2000

Moving into the security sector by launching our first Guard Tour System, "The Guard Series".

2006

UBM group beat other contenders and won the project of supplying fingerprint time & attendance recording system for Sands Hotel Macau under the American Venetians Group.

2018

UBM partakes as exhibitor at Hong Kong Electronics Fair 2018.

2016

Launch our new UT series fingerprint access control, including metallic case waterproof UTF-80.



2014

Multi-biometric Face, RFID or Password Identification Time Attendance and Access Control Terminal Face.



2012

UBM partakes as exhibitor at Hong Kong Electronics Fair 2012.

2010

UBM partakes as exhibitor at Hong Kong Electronics Fair 2010.

2008



UBM group formed their own fingerprint & IT, R&D & OEM development team, and their products have obtained CE approval successively.

2019 **CLP 中電**

UBM group succeeded in winning appointment by one of the largest private power companies in the Asia Pacific region trust: CLP Group as supplier and system integrator for electronic patrol monitoring system.

2017 **UnionCloud TA**

New cloud time attendance platform for end user and distributors "UnionCloud TA" released.

2015

UBM partakes as exhibitor at ShenZhen 2015 China Public Security Expo (CPSE).

2013

UBM partakes as exhibitor at Hong Kong Electronics Fair 2013.

2011

UBM partakes as exhibitor at the Hong Kong Electronic Fair 2011, 2011 China Public Security Fair and 2011CeBIT in Hannover, Germany.

2009



Subsidiary business of UBM group has obtained ISO9001:2008 approval. UBM group successfully combined the technologies of traditional time-recorders and fingerprint recognition in developing the standalone hybrid fingerprint verification card-printing time-recorder NU-81 which totally obviates buddy punching.



# UBM SOLUTIONS

## TIME ATTENDANCE

We are experts in time attendance products. We have over 40 years of experience in helping customers just like you. Our products range from traditional time recorders to cutting-edge biometrics terminals. We have work with more than 10,000 companies and provide services for plants, offices, schools, retail departments, car parks and construction site.

## ACCESS CONTROL

Every organization needs access control. It is crucial to ensure only authorized personnel are allowed to enter the premise. Our solution provides a flexible and scalable system, thru a combination of verification methods to minimize the possible threat.

## PATROL SYSTEM

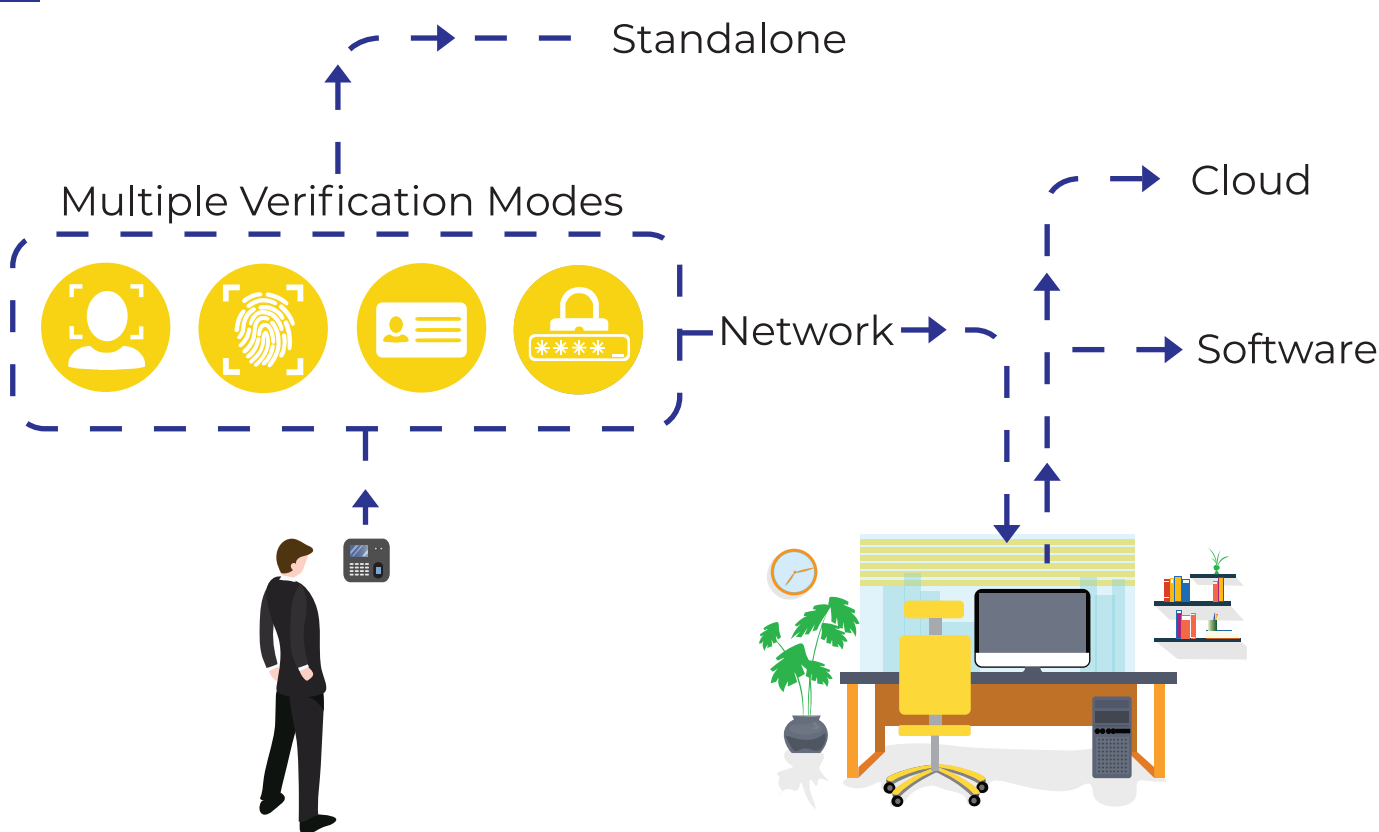
Patrol guard is an essential part of a foolproof security system. Our solution enables you to monitor and gather data if the assigned person has completed their duties on schedule and at the correct locations. This system has been proven with our customers to better utilize the patrolling workflow and review performance.



# TIME ATTENDANCE DEVICE



Facial

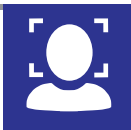


## NF-201 Network Device

Display : 2.8" TFT LCD Colour Screen  
Languages : English, Simplified Chinese, Traditional Chinese, Thai, Viet, Spanish (and more)  
Verification Modes : Face, Fingerprint, EM / Mifare, PIN  
Face Capacity : 1,000  
Fingerprint Capacity : 5,000  
Log Capacity : 500,000  
Identification Speed :  $\leq 1$  sec  
Communication : GPRS, TCP/IP, RS485, USB Drive, Wiegand IN & OUT (26 & 34), Optional WiFi  
Power Supply : DC 9V / 12V  
Operating Temperature :  $-10^{\circ}\text{C} - 60^{\circ}\text{C}$   
Operating Humidity : 20% – 80%  
Dimensions : 174 x 87 x 42mm



# TIME ATTENDANCE DEVICE



Facial

## Facial Recognition

### NF-110 Network Device

Display : 2.4" TFT LCD Colour Screen  
Languages : English, Simplified Chinese, Traditional Chinese, Thai, Viet, Spanish (and more)  
Verification Modes : Face, Fingerprint, EM / Mifare, PIN  
Face Capacity : 200  
Fingerprint Capacity : 1,000  
Log Capacity : 100,000  
Identification Speed :  $\leq 1$  sec  
Communication : TCP/IP, USB Drive, Optional WiFi  
Power Supply : DC 5V  
Operating Temperature :  $-10^{\circ}\text{C} - 60^{\circ}\text{C}$   
Operating Humidity : 20% – 80%  
Dimensions : 175 x 150 x 40mm



### NF-302 Network Device

Display : 2.8" TFT LCD Colour Screen  
Languages : English, Simplified Chinese, Traditional Chinese, Thai, Viet, Spanish (and more)  
Verification Modes : Face, Fingerprint, EM / Mifare, PIN  
Face Capacity : 1,000  
Fingerprint Capacity : 5,000  
Log Capacity : 300,000  
Identification Speed :  $\leq 1$  sec  
Communication : TCP/IP, USB Drive, Wiegand IN & OUT (26)  
Power Supply : DC 9V / 12V  
Operating Temperature :  $-10^{\circ}\text{C} - 60^{\circ}\text{C}$   
Operating Humidity : 20% – 80%  
Dimensions : 145 x 107 x 90mm



### NF-402 Network Device

Display : 2.8" TFT LCD Colour Screen  
Languages : English, Simplified Chinese, Traditional Chinese, Thai, Viet, Spanish (and more)  
Verification Modes : Face, Fingerprint, EM / Mifare, PIN  
Face Capacity : 1,000  
Fingerprint Capacity : 5,000  
Log Capacity : 300,000  
Identification Speed :  $\leq 1$  sec  
Communication : GPRS, TCP/IP, RS485, USB Drive, Wiegand IN & OUT (26 & 34), Optional WiFi  
Power Supply : DC 9V / 12V  
Operating Temperature :  $-10^{\circ}\text{C} - 60^{\circ}\text{C}$   
Operating Humidity : 20% – 80%  
Dimensions : 145 x 107 x 90mm



# TIME ATTENDANCE DEVICE



## Facial Recognition



### UTF-610 Network Device

- Display : 2.8" TFT LCD Colour Screen
- Languages : English, Simplified Chinese, Traditional Chinese, Thai, Viet, Spanish (and more)
- Verification Modes : Face, Fingerprint, EM / Mifare, PIN
- Face Capacity : 1,000
- Fingerprint Capacity : 5,000
- Card Capacity : 5,000
- Log Capacity : 300,000
- Identification Speed :  $\leq 1$  sec
- Communication : TCP/IP, USB Drive, Optional Wifi
- Power Supply : DC 9V
- Operating Temperature :  $-10^{\circ}\text{C} - 60^{\circ}\text{C}$
- Operating Humidity : 20% – 80%
- Dimensions : 157 x 170 x 38mm

# TIME ATTENDANCE DEVICE



## Facial Recognition



### UTF-630 Network Device

- Display : 2.8" TFT LCD Colour Screen
- Languages : English, Simplified Chinese, Traditional Chinese, Thai, Viet, Spanish (and more)
- Verification Modes : Face, Fingerprint, EM / Mifare, PIN
- Face Capacity : 1,000
- Fingerprint Capacity : 5,000
- Card Capacity : 5,000
- Log Capacity : 200,000
- Identification Speed :  $\leq 1$  sec
- Communication : TCP/IP, USB Drive, Optional WiFi
- Power Supply : DC 9V
- Operating Temperature :  $-10^{\circ}\text{C} - 60^{\circ}\text{C}$
- Operating Humidity : 20% – 80%
- Dimensions : 170 x 186 x 35mm



### UTF-620 Network Device

- Display : 2.8" TFT LCD Colour Screen
- Languages : English, Simplified Chinese, Traditional Chinese, Thai, Viet, Spanish (and more)
- Verification Modes : Face, Fingerprint, EM / Mifare, PIN
- Face Capacity : 1,000
- Fingerprint Capacity : 5,000
- Card Capacity : 5,000
- Log Capacity : 300,000
- Identification Speed :  $\leq 1$  sec
- Communication : TCP/IP, USB Drive, Optional WiFi
- Power Supply : DC 9V
- Operating Temperature :  $-10^{\circ}\text{C} - 60^{\circ}\text{C}$
- Operating Humidity : 20% – 80%
- Dimensions : 158 x 186 x 35mm



### UTF-6000 Standalone Device

- Display : 2.8" TFT LCD Colour Screen
- Languages : English, Simplified Chinese, Traditional Chinese, Thai, Viet, Spanish (and more)
- Verification Modes : Face, Fingerprint, PIN
- Face Capacity : 1,000
- Fingerprint Capacity : 3,000
- Log Capacity : 300,000
- Identification Speed :  $\leq 1$  sec
- Communication : USB Drive
- Power Supply : DC 9V
- Operating Temperature :  $-10^{\circ}\text{C} - 60^{\circ}\text{C}$
- Operating Humidity : 20% – 80%
- Dimensions : 157 x 170 x 38mm





# TIME ATTENDANCE DEVICE

## Fingerprint Recognition

## Fingerprint Recognition



Fingerprint

### NU-2300 Network Device

Display : 2.8" TFT LCD Colour Screen  
Languages : English, Simplified Chinese, Traditional Chinese, Thai, Viet, Spanish (and more)  
Verification Modes : Fingerprint, EM / Mifare, PIN  
Fingerprint Capacity : 1,000  
Log Capacity : 100,000  
Identification Speed : ≤ 1 sec  
Communication : TCP/IP, USB Drive, Optional RS485, Optional Wiegand IN & OUT (26 & 34)  
Power Supply : DC 9V  
Operating Temperature : 0°C – 40°C  
Dimensions : 185 x 128 x 40mm



### NU-2312 Network Device

Display : 2.8" TFT LCD Colour Screen  
Languages : English, Simplified Chinese, Traditional Chinese, Thai, Viet, Spanish (and more)  
Verification Modes : Fingerprint, EM / Mifare, PIN  
Fingerprint Capacity : 1,000  
Log Capacity : 100,000  
Identification Speed : ≤ 1 sec  
Communication : TCP/IP, USB Drive, Optional RS485, Optional Wiegand IN & OUT (26 & 34)  
Power Supply : DC 9V  
Operating Temperature : 0°C – 40°C  
Dimensions : 185 x 128 x 40mm



Fingerprint



### NU-2302 Network Device

Display : 2.8" TFT LCD Colour Screen  
Languages : English, Simplified Chinese, Traditional Chinese, Thai, Viet, Spanish (and more)  
Verification Modes : Fingerprint, EM / Mifare, PIN  
Fingerprint Capacity : 1,000  
Card Capacity : 50,000  
Log Capacity : 50,000  
Identification Speed : ≤ 1 sec  
Communication : TCP/IP, Wiegand IN & OUT (26), USB Drive  
Power Supply : DC 9V  
Operating Temperature : 0°C – 40°C  
Operating Humidity : 20% - 60%  
Dimensions : 195 x 148 x 50mm



### NU-2600 Network Device

Display : 3.2" TFT LCD Colour Screen  
Languages : English, Simplified Chinese, Traditional Chinese, Thai, Viet, Spanish (and more)  
Verification Modes : Fingerprint, EM / Mifare, PIN  
Fingerprint Capacity : 1,000  
Log Capacity : 100,000  
Identification Speed : ≤ 1 sec  
Communication : TCP/IP, USB Drive, Optional RS485, Optional Wiegand IN & OUT (26 & 34)  
Power Supply : DC 9V  
Operating Temperature : 0°C – 40°C  
Dimensions : 165 x 165 x 45mm



### NU-2308 Network Device

Display : 2.8" TFT LCD Colour Screen  
Languages : English, Simplified Chinese, Traditional Chinese, Thai, Viet, Spanish (and more)  
Verification Modes : Fingerprint, EM / Mifare, PIN  
Fingerprint Capacity : 1,000  
Log Capacity : 100,000  
Identification Speed : ≤ 1 sec  
Communication : TCP/IP, USB Drive, Optional RS485, Optional Wiegand IN & OUT (26 & 34)  
Power Supply : DC 9V  
Operating Temperature : 0°C – 40°C  
Dimensions : 185 x 128 x 40mm



### NU-2815 Network Device

Display : 2.4" TFT LCD Colour Screen  
Languages : English, Simplified Chinese, Traditional Chinese, Thai, Viet, Spanish (and more)  
Verification Modes : Fingerprint, EM / Mifare, PIN  
Fingerprint Capacity : 1,000  
Log Capacity : 120,000  
Identification Speed : ≤ 1 sec  
Communication : TCP/IP, USB Drive, RS485, Optional Wiegand IN & OUT (26 & 34)  
Power Supply : DC 9V  
Operating Temperature : -10°C – 60°C  
Operating Humidity : 20% - 80%  
Dimensions : 185 x 128 x 40mm



# TIME ATTENDANCE DEVICE

## Fingerprint Recognition

## Fingerprint Recognition

### UT-30 Network Device

Display : 2.8" TFT LCD Colour Screen  
Languages : English, Simplified Chinese, Traditional Chinese, Thai, Viet, Spanish (and more)  
Verification Modes : Fingerprint, EM / Mifare, PIN  
Fingerprint Capacity : 3,000  
Log Capacity : 100,000  
Identification Speed :  $\leq 1$  sec  
Communication : TCP/IP, RS485, Wiegand IN & OUT (26 & 34), USB Drive, Optional Wifi  
Power Supply : DC 9V  
Operating Temperature : 20°C – 60°C  
Dimensions : 190 x 180 x 42mm



### UT-61 Network Device

Display : 2.8" TFT LCD Colour Screen  
Languages : English, Simplified Chinese, Traditional Chinese, Thai, Viet, Spanish (and more)  
Verification Modes : Fingerprint, EM / Mifare, PIN  
Fingerprint Capacity : 3,000  
Log Capacity : 100,000  
Identification Speed :  $\leq 1$  sec  
Communication : TCP/IP, USB Drive, Optional Wifi  
Power Supply : DC 9V  
Operating Temperature : 20°C – 60°C  
Dimensions : 185 x 150 x 40mm



### UT-52 Network Device

Display : 2.8" TFT LCD Colour Screen  
Languages : English, Simplified Chinese, Traditional Chinese, Thai, Viet, Spanish (and more)  
Verification Modes : Fingerprint, EM / Mifare, PIN  
Fingerprint Capacity : 3,000  
Log Capacity : 100,000  
Identification Speed :  $\leq 1$  sec  
Communication : TCP/IP, RS485, Wiegand IN & OUT (26 & 34), USB Drive, Optional Wifi  
Power Supply : DC 5V / 9V  
Operating Temperature : 20°C – 60°C  
Dimensions : 187 x 131 x 41.5mm



### UT-82 Network Device

Display : 2.8" TFT LCD Colour Screen  
Languages : English, Simplified Chinese, Traditional Chinese, Thai, Viet, Spanish (and more)  
Verification Modes : Fingerprint, EM / Mifare, PIN  
Fingerprint Capacity : 3,000  
Log Capacity : 100,000  
Identification Speed :  $\leq 1$  sec  
Communication : GPRS, TCP/IP, RS485, Wiegand IN & OUT (26 & 34), USB Drive, Optional Wifi  
Power Supply : DC 9V  
Operating Temperature : 20°C – 60°C  
Dimensions : 199 x 169 x 40mm



### UT-60 Network Device

Display : 2.8" TFT LCD Colour Screen  
Languages : English, Simplified Chinese, Traditional Chinese, Thai, Viet, Spanish (and more)  
Verification Modes : Fingerprint, EM / Mifare, PIN  
Fingerprint Capacity : 3,000  
Log Capacity : 100,000  
Identification Speed :  $\leq 1$  sec  
Communication : TCP/IP, USB Drive, Optional Wifi  
Power Supply : DC 9V  
Operating Temperature : 20°C – 60°C  
Dimensions : 165 x 170 x 35mm



### UT-90 Network Device

Display : 2.8" TFT LCD Colour Screen  
Languages : English, Simplified Chinese, Traditional Chinese, Thai, Viet, Spanish (and more)  
Verification Modes : Fingerprint, EM / Mifare, PIN  
Fingerprint Capacity : 3,000  
Log Capacity : 100,000  
Identification Speed :  $\leq 1$  sec  
Communication : TCP/IP, RS485, Wiegand IN & OUT (26 & 34), USB Drive, Optional Wifi  
Power Supply : DC 9V  
Operating Temperature : 20°C – 60°C  
Dimensions : 192 x 136 x 41.5mm





# TIME ATTENDANCE DEVICE

## Fingerprint Recognition



Fingerprint

### UT-1800

Standalone Device

Display : 2.8" TFT LCD Colour Screen  
Languages : English, Simplified Chinese, Traditional Chinese, Thai, Viet, Spanish (and more)  
Verification Modes : Fingerprint, EM / Mifare, PIN  
Fingerprint Capacity : 1,000  
Card Capacity : 1,000  
Log Capacity : 100,000  
Identification Speed : ≤ 1 sec  
Communication : USB Drive  
Power Supply : DC 5V  
Operating Temperature : 0°C – 43°C  
Operating Humidity : 20% – 60%  
Dimensions : 158 x 130 x 25mm



### UT-2800

Standalone Device

Display : 2.8" TFT LCD Colour Screen  
Languages : English, Simplified Chinese, Traditional Chinese, Thai, Viet, Spanish (and more)  
Verification Modes : Fingerprint, EM / Mifare, PIN  
Fingerprint Capacity : 1,000  
Card Capacity : 1,000  
Log Capacity : 100,000  
Identification Speed : ≤ 1 sec  
Communication : USB Drive  
Power Supply : DC 5V  
Operating Temperature : 0°C – 43°C  
Operating Humidity : 20% – 60%  
Dimensions : 158 x 130 x 25mm

### UT-3800

Standalone Device

Display : 2.8" TFT LCD Colour Screen  
Languages : English, Simplified Chinese, Traditional Chinese, Thai, Viet, Spanish (and more)  
Verification Modes : Fingerprint, EM / Mifare, PIN  
Fingerprint Capacity : 1,000  
Card Capacity : 1,000  
Log Capacity : 100,000  
Identification Speed : ≤ 1 sec  
Communication : USB Drive  
Power Supply : DC 5V  
Operating Temperature : 0°C – 43°C  
Operating Humidity : 20% – 60%  
Dimensions : 158 x 130 x 25mm



# TIME ATTENDANCE DEVICE

## Fingerprint Recognition



Fingerprint

### UT-5800

Standalone Device

Display : 2.8" TFT LCD Colour Screen  
Languages : English, Simplified Chinese, Traditional Chinese, Thai, Viet, Spanish (and more)  
Verification Modes : Fingerprint, EM / Mifare, PIN  
Fingerprint Capacity : 1,000  
Card Capacity : 1,000  
Log Capacity : 100,000  
Identification Speed : ≤ 1 sec  
Communication : USB Drive  
Power Supply : DC 5V  
Operating Temperature : 0°C – 43°C  
Operating Humidity : 20% – 60%  
Dimensions : 158 x 130 x 25mm



### UT-6000

Standalone Device

Display : 4.3" Touch Screen  
Languages : English, Simplified Chinese, Traditional Chinese, Thai, Viet, Spanish (and more)  
Verification Modes : Fingerprint, EM / Mifare, PIN  
Fingerprint Capacity : 1,000  
Card Capacity : 1,000  
Log Capacity : 100,000  
Identification Speed : ≤ 1 sec  
Communication : USB Drive  
Power Supply : DC 5V  
Operating Temperature : 0°C – 43°C  
Operating Humidity : 20% – 60%  
Dimensions : 175 x 120 x 40mm

### UT-6800

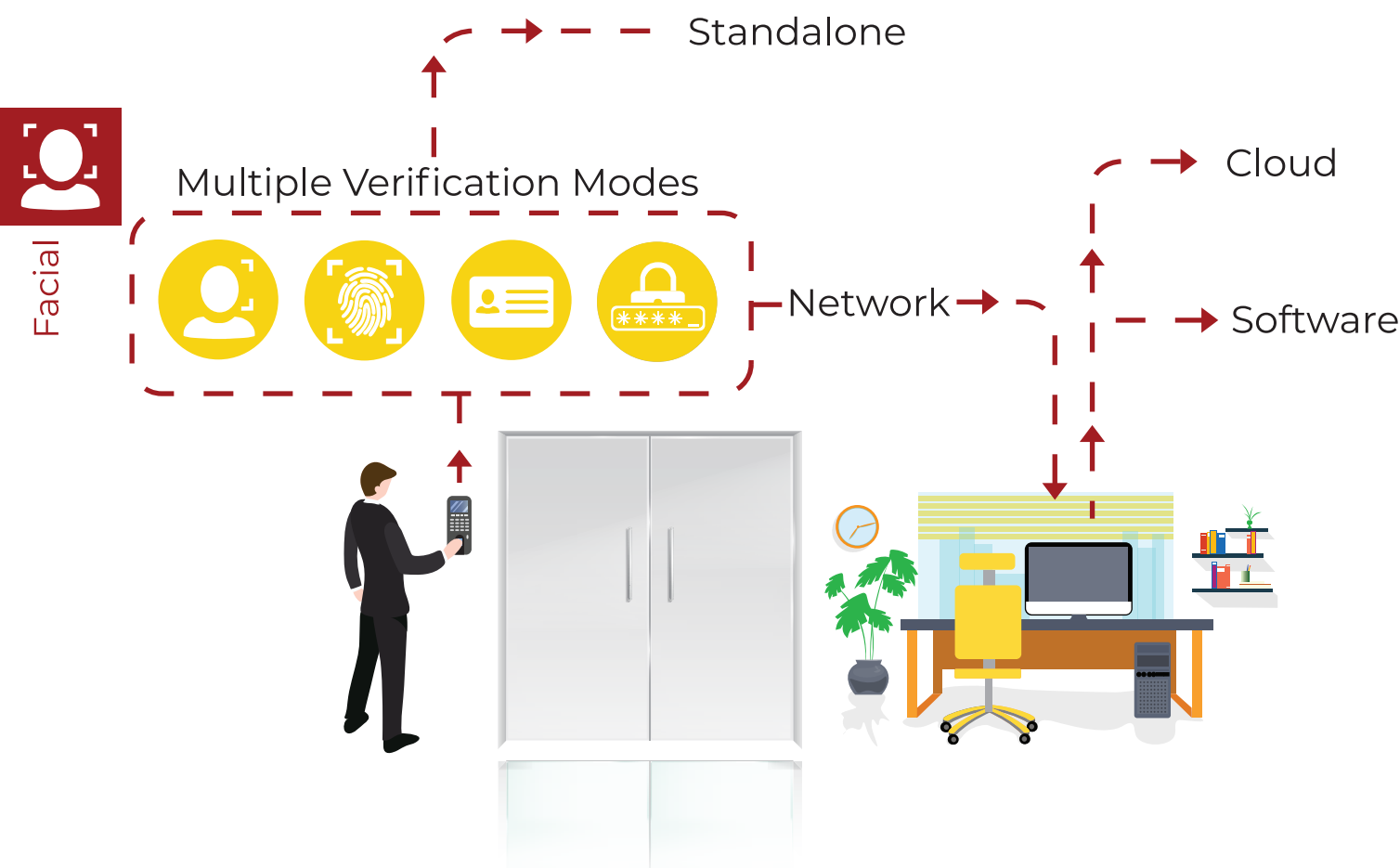
Standalone Device

Display : 2.8" TFT LCD Colour Screen  
Languages : English, Simplified Chinese, Traditional Chinese, Thai, Viet, Spanish (and more)  
Verification Modes : Fingerprint, EM / Mifare, PIN  
Fingerprint Capacity : 1,000  
Card Capacity : 1,000  
Log Capacity : 100,000  
Identification Speed : ≤ 1 sec  
Communication : USB Drive  
Power Supply : DC 5V  
Operating Temperature : 0°C – 43°C  
Operating Humidity : 20% – 60%  
Dimensions : 158 x 130 x 25mm



# ACCESS CONTROL DEVICE

## Facial Recognition



### NFA-710

Network Device

Display : 4.3" TFT LCD Touch Screen

Languages : English, Simplified Chinese, Traditional Chinese, Thai, Viet, Spanish (and more)

Verification Modes : Face, EM / Mifare, PIN

Face Capacity : 1,500

Card Capacity : 3,000

Log Capacity : 50,000

Identification Speed :  $\leq 1$  sec

Communication : TCP/IP, RS485, Optional WiFi  
Wiegand IN & OUT (26 & 34)

Power Supply : DC 12V

Dimensions : 148 x 125 x 112mm



# ACCESS CONTROL DEVICE

## Facial Recognition

### NFA-608

Network Device

Display : 2.8" TFT Touch Screen

Languages : English, Simplified Chinese, Traditional Chinese, Thai, Viet, Spanish (and more)

Verification Modes : Face, EM / Mifare, PIN

Face Capacity : 1,000

Card Capacity : 5,000

Log Capacity : 100,000

Identification Speed :  $\leq 1$  sec

Communication : TCP/IP, Wiegand IN & OUT (26 & 34),  
USB Drive, Optional Wifi

Power Supply : DC 12V

Dimensions : 187 x 73 x 43mm



### NFA-750

Network Device

Display : 4.3" TFT LCD Colour Screen

Languages : English, Simplified Chinese, Traditional Chinese, Thai, Viet, Spanish (and more)

Verification Modes : Face, Fingerprint, EM / Mifare, PIN

Face Capacity : 1,500

User Capacity : 3,000

Log Capacity : 100,000

Identification Speed :  $\leq 1$  sec

Communication : TCP/IP, RS485 , USB Drive, Optional Wifi  
Wiegand IN & OUT (26 & 34)

Power Supply : DC 12V

Dimensions : 205 x 95 x 48mm





# ACCESS CONTROL DEVICE

## Facial Recognition

## Fingerprint Recognition

### UTF-810

Network Device

- Display : 4.3" TFT Touch Screen
- Languages : English, Simplified Chinese, Traditional Chinese, Thai, Viet, Spanish (and more)
- Verification Modes : Face, Fingerprint, EM / Mifare, PIN
- Face Capacity : 1,500
- Fingerprint Capacity : 5,000
- Card Capacity : 5,000
- Log Capacity : 500,000
- Identification Speed : ≤ 1 sec
- Communication : TCP/IP, USB Drive, Optional Wifi  
Wiegand IN & OUT (26 & 34)
- Power Supply : DC 12V
- Operating Temperature : 0°C – 45°C
- Operating Humidity : 20% - 80%
- Dimensions : 165 x 140 x 30mm



### NU-810

Network Device

- Display : 2.8" TFT LCD Colour Screen
- Languages : English, Simplified Chinese, Traditional Chinese, Thai, Viet, Spanish (and more)
- Verification Modes : Fingerprint, EM / Mifare, PIN
- Fingerprint Capacity : 5,000
- Card Capacity : 5,000
- Log Capacity : 130,000
- Identification Speed : ≤ 1 sec
- Communication : TCP/IP, RS485 , USB Drive  
Wiegand IN & OUT (26 & 34),
- Power Supply : DC 12V
- Operating Temperature : 0°C – 45°C
- Operating Humidity : 20% - 60%
- Dimensions : 198 x 77 x 33mm



NU-831



### UTF-31

Network Device

- Display : 2.4" TFT LCD Colour Screen
- Languages : English, Simplified Chinese, Traditional Chinese, Thai, Viet, Spanish (and more)
- Verification Modes : Fingerprint, EM / Mifare, PIN
- Fingerprint Capacity : 3,000
- Card Capacity : 3,000
- Log Capacity : 100,000
- Identification Speed : ≤ 1 sec
- Communication : TCP/IP, RS485, Wiegand IN & OUT (26 & 34),  
USB Drive, Optional Wifi
- Power Supply : DC 12V
- Operating Temperature : 0°C – 43°C
- Operating Humidity : 20% - 60%
- Dimensions : 190 x 80 x 33mm



### UTF-70

Network Device

- Display : 2.0" TFT LCD Colour Screen
- Languages : English, Simplified Chinese, Traditional Chinese, Thai, Viet, Spanish (and more)
- Verification Modes : Fingerprint, EM / Mifare, PIN
- Fingerprint Capacity : 3,000
- Card Capacity : 3,000
- Log Capacity : 100,000
- Identification Speed : ≤ 1 sec
- Communication : RS485, Wiegand IN & OUT (26 & 34),  
USB Drive, Optional Wifi
- Power Supply : DC 12V
- Operating Temperature : 0°C – 43°C
- Operating Humidity : 20% - 80%
- Dimensions : 185 x 64 x 47mm



### UFA-A1

Network Device

- Display : 2.8" TFT Touch Screen
- Languages : English, Simplified Chinese, Thai, Viet, Traditional Chinese, Spanish (and more)
- Verification Modes : Face, EM / Mifare, PIN
- Face Capacity : 1,000
- PIN Capacity : 2,000
- Card Capacity : 2,000
- Log Capacity : 100,000
- Identification Speed : ≤ 1 sec
- Communication : TCP/IP, USB Drive, RS485, Optional Wifi  
Wiegand IN & OUT (26 & 34)
- Power Supply : DC 12V
- Dimensions : 180 x 80 x 31mm



# ACCESS CONTROL DEVICE

Fingerprint

# ACCESS CONTROL DEVICE

## Fingerprint Recognition

### UTF-68 Network Device

Display : 2.8" TFT LCD Colour Screen  
Languages : English, Simplified Chinese, Traditional Chinese, Thai, Viet, Spanish (and more)  
Verification Modes : Fingerprint, EM / Mifare, PIN  
Fingerprint Capacity : 3,000  
Card Capacity : 3,000  
Log Capacity : 100,000  
Identification Speed : ≤ 1 sec  
Communication : TCP/IP, RS485 , Wiegand OUT (26 & 34), USB Drive, Optional GPRS, Optional Wifi  
Power Supply : DC 12V  
Operating Temperature : 0°C – 43°C  
Operating Humidity : 20% - 60%  
Dimensions : 195 x 115 x 42mm



Fingerprint

### UTF-80 Network Device

Display : 2.8" TFT LCD Colour Screen  
Languages : English, Simplified Chinese, Traditional Chinese, Thai, Viet, Spanish (and more)  
Verification Modes : Fingerprint, EM / Mifare, PIN  
Fingerprint Capacity : 5,000  
Card Capacity : 5,000  
Log Capacity : 130,000  
Identification Speed : ≤ 1 sec  
Communication : TCP/IP, RS485 , Wiegand IN & OUT (26 & 34), USB Drive  
Power Supply : DC 12V  
Operating Temperature : 0°C – 45°C  
Operating Humidity : 20% - 60%  
Dimensions : 198 x 77 x 33mm



### UTF-1000 Standalone Device

Display : 2.4" TFT Touch Screen  
Languages : English, Simplified Chinese, Thai, Viet, Spanish (and more)  
Verification Modes : Fingerprint, EM / Mifare, PIN  
Fingerprint Capacity : 3,000  
Card Capacity : 3,000  
Log Capacity : 100,000  
Identification Speed : ≤ 1 sec  
Communication : RS485 , Wiegand IN & OUT (26 & 34), USB Drive  
Power Supply : DC 12V  
Operating Temperature : 0°C – 43°C  
Operating Humidity : 20% - 80%  
Dimensions : 118 x 118 x 30mm



# ACCESS CONTROL DEVICE

## Fingerprint Recognition

### UTF-12A Standalone Device

Verification Modes : Fingerprint, EM / Mifare, PIN  
Fingerprint Capacity : 500  
Card Capacity : 500  
Log Capacity : 100,000  
Identification Speed : ≤ 1 sec  
Communication : RS485 , Wiegand OUT (26 & 34), USB Drive  
Power Supply : DC 12V  
Operating Temperature : 0°C – 45°C  
Operating Humidity : 20% - 60%  
Dimensions : 86 x 86 x 30mm



Fingerprint

### UTF-18 Network Device

Display : MonoChrome LCD  
Languages : English, Simplified Chinese, Traditional Chinese, Thai, Viet, Spanish (and more)  
Verification Modes : Fingerprint, EM / Mifare, PIN  
Fingerprint Capacity : 3,000  
Card Capacity : 3,000  
Log Capacity : 100,000  
Identification Speed : ≤ 1 sec  
Communication : Wifi, TCP/IP, RS485 , USB Drive, Wiegand OUT (26 & 34)  
Power Supply : DC 12V  
Operating Temperature : 0°C – 45°C  
Operating Humidity : 20% - 60%  
Dimensions : 142 x 92 x 30mm



### UTF-28 Network Device

Display : 2.8" TFT LCD Colour Screen  
Languages : English, Simplified Chinese, Traditional Chinese, Thai, Viet, Spanish (and more)  
Verification Modes : Fingerprint, EM / Mifare, PIN  
Fingerprint Capacity : 3,000  
Card Capacity : 3,000  
Log Capacity : 100,000  
Identification Speed : ≤ 1 sec  
Communication : TCP/IP, RS485 , Wiegand IN & OUT (26 & 34), USB Drive, Optional Wifi  
Power Supply : DC 12V  
Operating Temperature : 0°C – 43°C  
Operating Humidity : 20% - 60%  
Dimensions : 86 x 86 x 30mm





# ACCESS CONTROL DEVICE

## PIN / Card Recognition



### Specification

	TDS-9C/D	TDS-10EM-W	TDS-19EM-W
Verification Modes	EM / Mifare, PIN		
Card Capacity	3,000	2,000	2,000
Identification Speed	≤ 1 sec		
Communciation	Wiegand IN & OUT (26)		
Reading Range	2 - 6cm		
Power Supply	DC 12V, DC 24V		
Operating Temperature	-45°C – 60°C		
Operating Humidity	10% – 90%		
Dimensions	78.7 x 78.7 x 18.6mm	158 x 43 x 21.7mm	86 x 86 x 20mm

## Controller Board

### Specification

	UT-S01	UT-S02	UT-S04
Fingerprint Capacity	5,000		
Card Capacity	30,000		
PIN Capacity	5,000		
Log Capacity	110,000		
Communciation	TCP/IP, USB Drive, Optional GPRS, Optional Wifi		
Number of Doors Control	1	2	4
Reading Range	Within 100m, suggest within 80m		
Power Supply	DC 12V		
Operating Temperature	-40°C – 70°C		
Operating Humidity	10% - 90%		



UT-S01



UT-S02



UT-S04



# ACCESS CONTROL - ACCESSORIES

## RFID Card



### Specification

	RFID Key Fob	EM Card 0.8mm	EM Card 1.8mm	Mifare Card
Standard	ISO 7816-1	ISO 7816-1		ISO 14443 A
Frequency	125kHz	125kHz		13.56MHz
Dimensions	37 x 30 x 6mm	85 x 53 x 0.8mm	85 x 53 x 1.8mm	85 x 53 x 0.8mm

## Electronic Door Lock



### Specification

	UTM-205	UTM-280LED
Working Voltage	DC 12V	DC 12V, DC 24V
Operating Current	Start Current: 900mA, Standby Current: 110mA	250mA, 500mA
Holding Force	800kg	280kg
Applicable	Glass / Metal / Wooden Door	Fireproof / Glass / Metal / Wooden Door
Dimensions	200 x 34 x 42mm	250 x 48.5 x 25mm
Accessories		



Bracket: UTM-20



Power Supply: UTM-5A



Bracket: UTM-21



U-shape Bracket: UTM-280U



Power Supply: UTM-5A

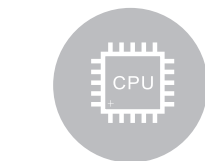


L-shape, Z-shape Bracket: UTM-280ZL





Specification	MK-7	MK-40	MK-80
Power Supply	110V, 220V		110V, 220V
Operating Current	0.19A		0.19A
Operating Temperature	0°C – 40°C		0°C – 40°C
Operating Humidity	10% - 80%		10% - 80%
Sizes of Cards	85 x 187mm		85 x 187mm
Net Weight	1.98kg		2.5kg
Dimensions	187 x 131 x 229mm		196 x 137 x 249mm



Accurate Quartz Clock  
with Perpetual Calendar



Anti-Dust Body

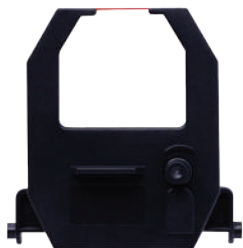


500,000 Times  
Printing Life



Speedy 24  
Autofeeds + Prints/min

Accessories



Ribbon: CRT-04(D)



Time Card: CARD(D) DP 350-3

Time & Attendance Recorder Ribbon

CRT-04(D)



Suitable For :

AMANO	BX-6200 / EX-3000N / EX-3100N / EX-3200N / EX-3500N / EX-4000N / EX-5100N / EX-5200 / EX-6000N / EX-6100N / EX-6200N / EX-6400 / EX-9000 / EX-9100 / EX-9200 / NS-5000 / NS-5100 / PIX-10 / PIX-21 / PIX-200 / PIX-3000
JM	JM-168 / JM-188
LUCKS	LD-5000 / LD-5000A
NEEDTEK	TS-350 / UT-5000 / UT-5300 / UT-5600 / UT-6000 / UT-6300 / UT-6600 / UT-7000 / UT-7300 / UT-7600
NIDEKA	MD-10 / MD-20 / MD-30 / MD-40 / MK-7 / MK-40 / MK-80 / ND-6000N / ND-6000NA / ND-6000NS / ND-7000
TIME POWER	T-8
TIMMY	T-6 / T-6B / T-6S / T-6SB / T-7B / T-7S
VARIOUS	610 / 710 / 730 / 740 / 886B
VERTEX	TR-200C / TR-512B / TR-512L / TR-895B



BX-1500 / 2000  
Ribbon



Suitable For :

BX-1500 / BX-2000



UT-2000  
Ribbon

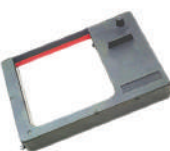


Suitable For :

NEEDTEK      UT-2000



CRT-02(D)



Suitable For :

JM	168L / M800 / L900L
KINGS POWER	KP-370 / KP-3000 / KP-6000 / KP-8700 / KP-9000
MINDMAN	M-190 / M-300 / M-500 / Mechanical Time Recorder
NIDEKA	NE-950 / NE-8800 / NE-8810 / NE-8820 / NE-9800 / NE-9810 / NE-9820 / TIMMY-P(X)
RONALD JACK	RJ-800A / RJ-900A
TIME POWER	QR-52 / QR-52A / QR-52S / QR-525 / QR-2000
Eagle Time	NT-833



841-5113P16D(V)



Suitable For :

LUCKS	QR-732 / QR-733
NIDEKA	EX-8 / EX-9 / NE-850 / NE-860 / NE-2000 / NE-3000
PLD	PLD-982 / PLD-983



841-5113P19D(V)



Suitable For :

LUCKS	QR-732 / QR-733
NIDEKA	NE-850 / NE-860 / NE-2000 / NE-3000 / EX-8 / EX-9
TIMMY	TIMMY / TIMMY P(X)
PLD	PLD-982 / PLD-983



CRT-04(S)



Suitable For :

EX-3000 / ND-6000 / AP-20 / AP-30 / TS-220 / 350



CRT-10(BK)



Suitable For :

ACROPRINT	175
NIDEKA	AP-10
SEIKO / SEIKOSHA	QR-350 / QR-395 / TP-10 / TP-10II / TP-20 / TP-30 / TP-50
SIMPLEX	1620



CRT-06(BL)



Suitable For :

RAPIDPRINT  
WIDMER      776N / ND-2 / ND-3 / T-LED-3





G-III Plus

Features:

**Sturdiness:**  
Durable alloy case with stainless steel contactor, built-in flexible silicone layer, internal circuit board epoxy hardened, which completely resist drops and water-proof.

**High Performance:**  
Specific low voltage design, 3.6V lithium battery supports 700,000 continuous readings.

**Storage:**  
10,000 records

**Reminder:**  
LED and buzzer to prompt success read



G-VII

Features:

**Sturdiness:**  
Without damage even falls from high place

**High Performance:**  
3 patents. Battery can be used for a long time, hand held design, multiple waterproof structure, super strong

**Storage:**  
10,000 records

**Reminder:**  
Light, vibration

**Structure:**  
Completely waterproof



NPS15C DIN P-4 15 sheets

Security Level DIN (66399) : DIN P-4  
Cut Type : Confetti Cut  
Power Supply : 120V, 230V  
Sheet Capacity : 15  
Particle Size : 3.9 x 38mm  
Speed : 120V: 6.5s, 230V: 7.5s  
Duty Cycle : 10 mins  
Processing Noise : ≤ 65dB  
Paper Entry : 226mm  
Able to Cut : CD, Credit Cards, Paper Clips, Staples  
Basket Capacity : 26.5L  
Weight : 17kg  
Dimensions : 390 x 279 x 525mm (Not including Wheels)



CT-8C DIN P-3 8 sheets

Security Level DIN (66399) : DIN P-3  
Cut Type : Confetti Cut  
Power Supply : 120V, 230V  
Sheet Capacity : 8  
Particle Size : 3.9 x 50mm  
Speed : 120V: 6.5s, 230V: 6s  
Duty Cycle : 5-7 mins  
Processing Noise : ≤ 65dB  
Paper Entry : 220mm  
Able to Cut : Credit Cards, Paper Clips, Staples  
Unable to Cut : CD  
Basket Capacity : 15.1L  
Weight : 9kg  
Dimensions : 380 x 252 x 415mm



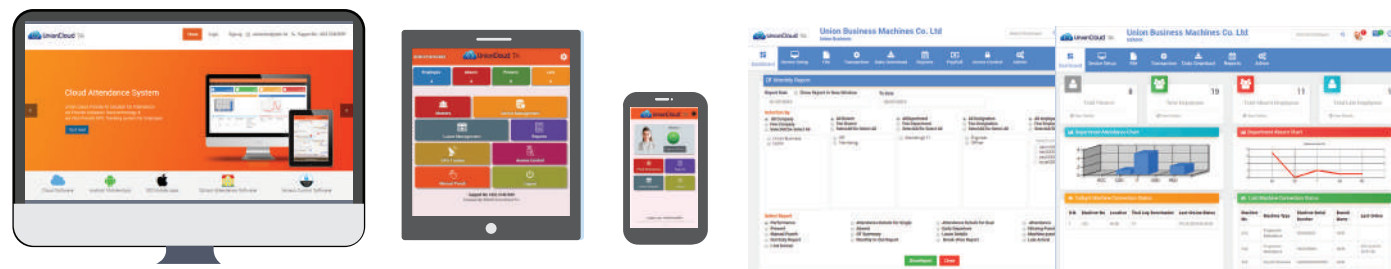


## Union Attend™

### NIDEKA Time & Attendance Management Software

a complete time & attendance system, powerful and easy to use software bundling with NIDEKA full range of Biometrics & RFID time recorders.

**Union Attend™** Time and Attendance Software helps you manage your workforce and track employee time and attendance in an **easier**, more **efficient** and **affordable** way. The Union-Attend™ intuitive, easy to use interface will dramatically reduce the number of hours required to process employee time and attendance and automatically calculate total worked hours including overtime, vacation, sick days and holidays. With the click of a button, employee data can be imported to create many informative time and attendance reports.



**Union Cloud TA** enables you to **monitor**, **record** and **evaluate** the attendance of employees easily both in the field and inside the buildings. Employees can take attendance by using **tablets**, **smartphones** and **web app** including tracking GPS positions and saving pictures. In our cloud system, you can easily **add**, **edit** or **review** the attendance data and reports.

### Provides :

- Real Time Monitoring of Attendance
- Instant Attendance Reporting
- Easy to implement - No software to install

